

CARRIS



UTILITY SOLUTIONS

COMPANY NEWSLETTER

Spring 2017
Issue 01

ABOUT CARRIS

Carris Utility Solutions is a leading service provider to the utility and construction industries. We provide a comprehensive range of services and solutions, specialising in civil engineering and cable installation projects for both Distribution Network Operators and Independent Distribution Network Operators.

CUS offers specialist skills and expertise, with teams of engineers ensuring effective management of works involving utility repair, replacement and maintenance. We pride ourselves on executing a holistic approach to our work, resulting in rapid installation and repair, whilst minimising the impact of these works on the local community and environment.

We draw on our staff's collective experience of working on complex utility installations to ensure the successful delivery of every project we undertake.

"Our expertise serving your success"

WHERE TO FIND US

Main Office: [Standard House, Unit 3 Meridian Centre, Vulcan Way, Croydon, CR0 9UG](#)

Ashford Depot: [Unit 1, Sandy Lane Farm, Sandy Lane, Great Chart, Ashford, Kent, TN26 1JN](#)

tel: [01689 809 844](tel:01689809844)
email: marketing@carris-utility.co.uk

www.carris-utility.co.uk

FROM THE MANAGING DIRECTOR

Our company values, esteemed clients, valued partners and incredible staff are what have fuelled our success, and I would like to take this opportunity to say thank you to each and every one of you who have joined us on our journey and played a huge part in our success. It is the spirit of teamwork that enables us to implement solutions that really make a difference, whether it's our clients, partners, service providers, or our dedicated staff.

With an increased number of projects to deliver in 2017, the future is bright. We must make sure that we maintain our service levels with renewed enthusiasm, to serve our clients with the care and diligence we always have.

-Barry Bryant

-  Cover Page
-  What's New
-  Health & Safety
-  Case Study / Interview

@CarrisUtility

WHAT'S NEW?

Firstly we address the elephant in the room that is this publication itself; the new quarterly CUS newsletter. We hope it will inform both CUS staff and clients alike on news, important information, and a peek into life and work here at Carris. The newsletter will be published as follows:

■ Spring edition - February

■ Summer edition - May

■ Autumn edition - August

■ Winter edition - November

Also we welcome some new employees to the Carris family. Sam Polley takes on the role of Operations Director, Brett O'Brien joins us as Major Projects Construction Manager and Alexandrina Brown is our new Managerial Business Support. Everyone wishes you all a successful career with Carris Utility Solutions.

An interesting event in the Carris office occurred when employees were invited to vote between six suggested company slogans for our future use. It was a close race, but the winning entry was 'Our expertise serving your success'; this can now be seen attached to our company logo on any official Carris documents and employee email signatures going forward. Thank you to everyone who participated in the poll, and well done to the voters who chose the winning slogan.

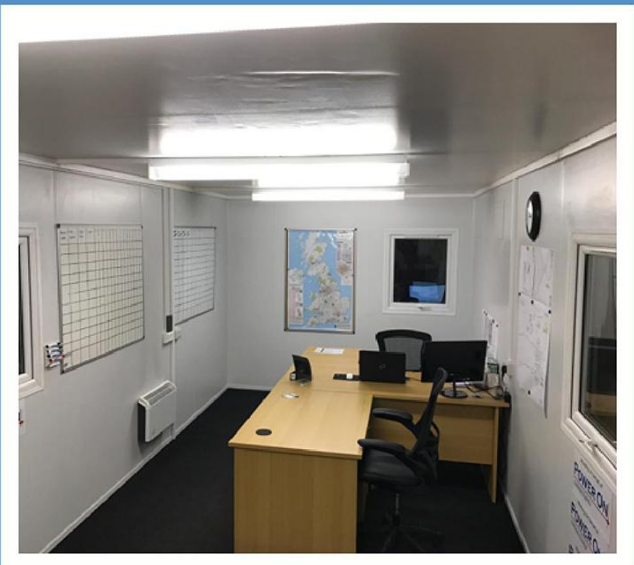
Finally, as a reward of our successful delivery of projects in London we are pleased to announce the award of two additional areas with Power On Connections. Area 3 Kent Sussex, and area 8, which is the SSE footprint, Oxford, Reading, West London etc. In addition, POC has granted us the opportunity to deliver one of their Major Projects, Camden Lock Village. This project is being managed by Brett O'Brien, and serves as this edition's case study on page 4.

ASHFORD DEPOT

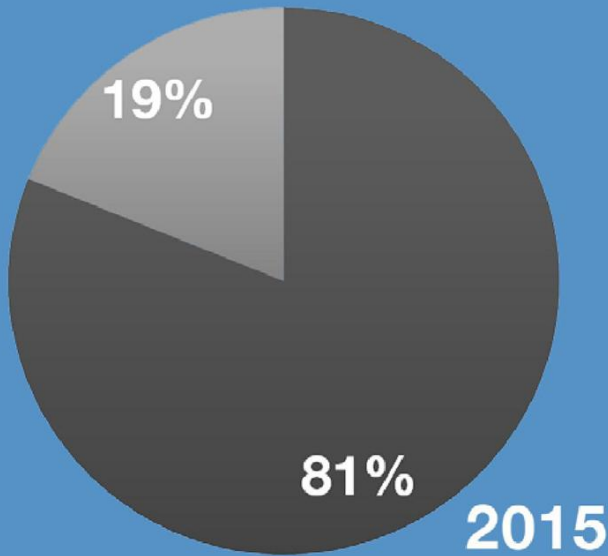
In December 2016 Carris Utility Solutions took over a 4,275ft² unit, office and external storage yard in Ashford, Kent.

The new depot provides greater operational capacity within the southern region, and a true demonstration of Carris Utility Solutions' commitment to provide a local and reliable service to our current and prospective clients.

Colleagues and clients are welcome to visit and take a look around the new addition to the Carris family.

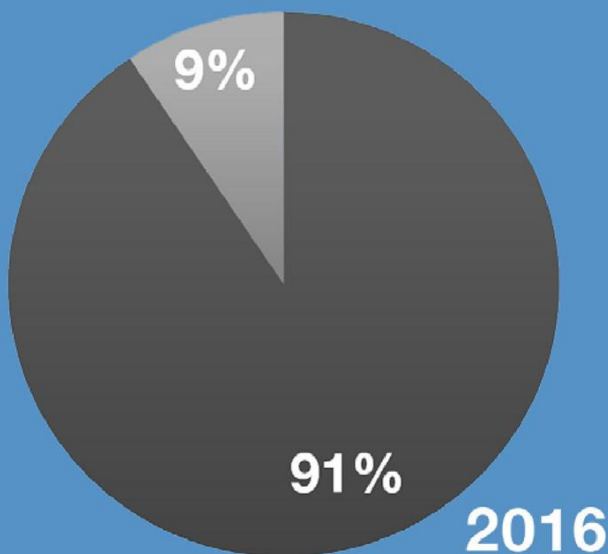


PPE AUDITS



Not only have we managed to increase the number of audits in 2015 from 1031 to 1376 in 2016, but also the amount of non-compliances has decreased from 295 in 2015 to 174 in 2016. In percentages, this is a 91% pass rate as opposed to 81%, a whole 10% difference. Furthermore, congratulations to our 66 employees who had 100% pass rates in their audits for the year, again increasing from 50 employees the previous year.

We should all be proud of these achievements in promoting Health & Safety on our sites, and make sure to develop this further in 2017.



EYE PROTECTION

One Health & Safety issue which has been highlighted through our PPE audits is that failures in Eye Protection is incredibly high, accounting for 43% of all fails in 2016. Not only do you have a legal obligation to use the eye protection provided to you, but eye injuries can be very serious. Examples include foreign objects in the eye, chemical and heat burns, and damaging ultraviolet light; all of these could lead to eyesight deterioration, the need for surgery, or even blindness. Your eyes are very vulnerable and precious, so please make sure that you use appropriate eye protection when working on-site.



Eye protection must be worn

If you have any issues regarding eye protection, or have any suggestions to encourage the use of it on-site, please contact Jolene Matthews.

email: safety@carris-utility.co.uk

TOOLBOX TALKS

In January our Compliance & Safety Manager, Jolene Matthews, gave a Toolbox Talk entitled 'Legal Duties – What They Mean To You', in order to promote awareness of Health & Safety legislation. It included information on what is expected of our employees regarding The Health and Safety at Work Act 1974 and its regulations.

For example, employees were informed that it is their responsibility to safeguard their own health and safety, as well as that of others; co-operate with our Carris' Health & Safety guidelines; and making sure that they don't interfere with anything provided for the purposes of health and safety.

Feel free to contact us for more information on Health & Safety, Carris Utility Solutions' Health & Safety policy, and our Toolbox Talks.

THE CAMDEN PROJECT

Camden Lock Village is a multi-million-pound development consisting of retail units, a multi-screen cinema, a gym, and both social and private luxury housing. Carris Utility Solutions was granted the privilege of being sub-contracted to undertake the installation of 2.7km dual lay 11kv.

There are two teams working on the project at all times across two sites, which span two London boroughs: Islington and Camden. This means we have the challenge of communicating with two different councils at one time, all the while trying to ensure smooth delivery. Not only that, but services such as TFL buses, environmental services, and parking services must also be liaised with when required. For this project to run continuously, the programmed schedule must be adhered to at all times, which requires careful planning and communication with these external variables to prevent delays. If this wasn't done with care, then parking bay suspensions, bus stop suspensions and notices may not be able to be obtained or amended at short notice.

CUS has worked closely alongside the principle contractor in helping to amend the programme and support them when any problems may have arisen. We are happy to report that, at present, the project is running ahead of schedule, with approximately 1km of install complete, and no accidents to date.



EMPLOYEE INTERVIEW

We asked our Managing Director, *Barry Bryant*, to be the first interviewee for our company newsletter.

Q: TELL US SOMETHING INTERESTING YOUR CO-WORKERS PROBABLY DON'T KNOW ABOUT YOU.

A: I would say they might not know that I actually qualified as a professional photographer. And that's when it was before the digital stage so when it was developing proper photographs from the baths. That's what my original kind of profession was, if you like.

Q: WHAT CHEERS YOU UP WHEN YOU'RE DOWN?

A: Smiling people cheer me up, I think, Yeah, seeing other people happy.

Q: WHAT DO YOU ORDER AT A RESTAURANT YOU HAVE NEVER BEEN TO BEFORE?

A: Garlic Bread.

Q: WHAT SONG DID YOU LAST CHOOSE TO LISTEN TO?

A: That was last night- it was Shiver by Coldplay.

Q: WHAT DID YOU DO FOR YOUR LAST BIRTHDAY?

A: I invited some close friends, we had about ten people around our house and we had a chef come in and do a barbeque. It was good, but it rained, of course, in the summer.

Q: CAN YOU REMEMBER THE FIRST MOVIE YOU SAW AT THE CINEMA?

A: Raiders of the Lost Ark, it was at a cinema in a holiday camp.

Q: WHERE DID YOU GO ON YOUR MOST RECENT HOLIDAY?

A: We stayed in hundred-year-old fisherman huts on the beach in Whitstable over New Year's, as a family with the dogs.

Q: WHAT IS YOUR PERFECT PIZZA?

A: A Meat Feast. All the meats, maybe with a hint of barbeque as well.